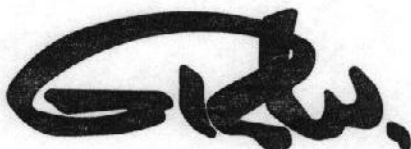
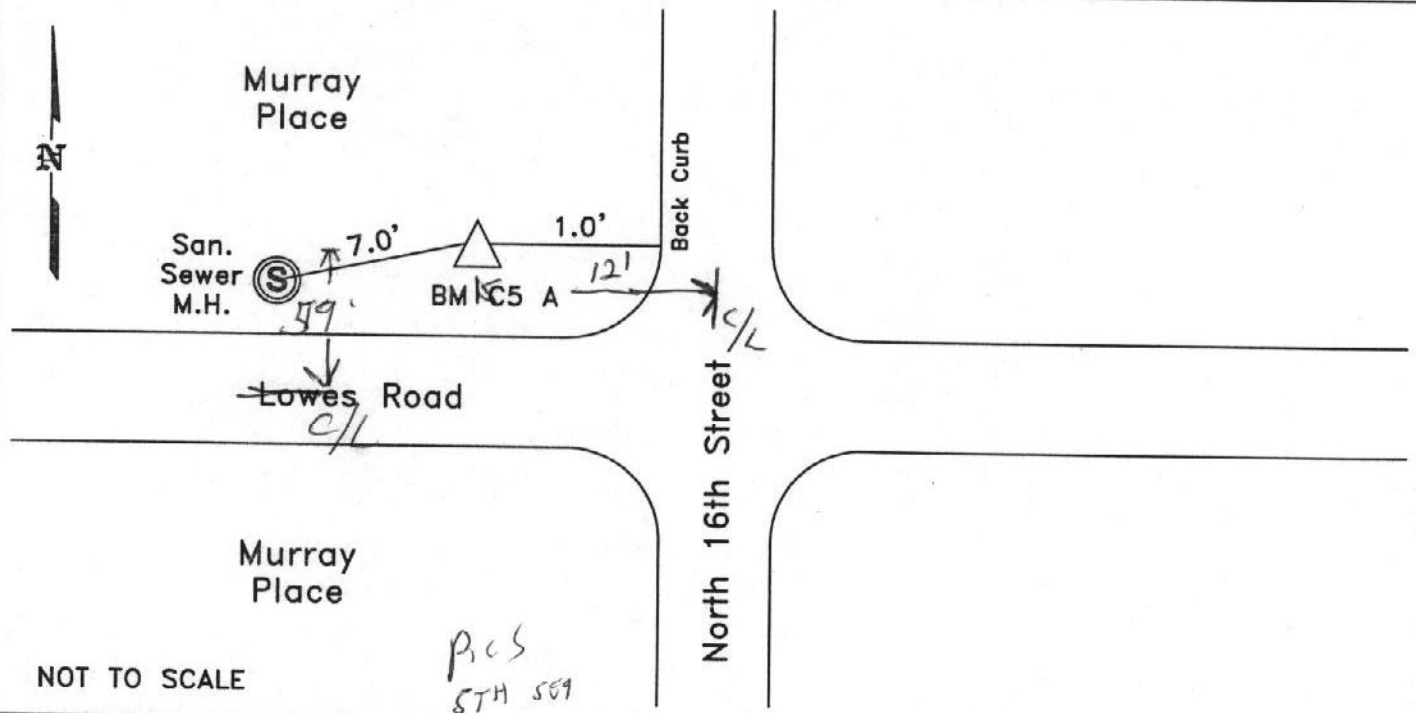


# CITY OF MURRAY CONTROL MONUMENT CARD

DESIGNATION: BM C5 A  
TYPE: CONCRETE MONUMENT W/ CITY DISK  
DATE SET: JUNE 2002 QUAD: DEXTER, KY.  
HORIZONTAL DATUM: NAD-83 VERTICAL DATUM: NAVD-88  
STATE: KENTUCKY COUNTY: CALLOWAY ZONE: KY. S 1602

NORTHING: 1757353.43 FT  
EASTING: 885038.38 FT  
ELEVATION: 524.20 FT (GPS)  
LATITUDE: N 36°37'34.47150" LONGITUDE: W 088°19'27.63964"  
SCALE: CONVERGENCE:  
PLANE AZI. TO AZI. MARK:

To Reach: Located at the intersection of Lowes Road and North 16th Street.



GRW Aerial Surveys, Inc.  
801 Corporate Dr. Lexington Ky. 40503  
(859)223-3999